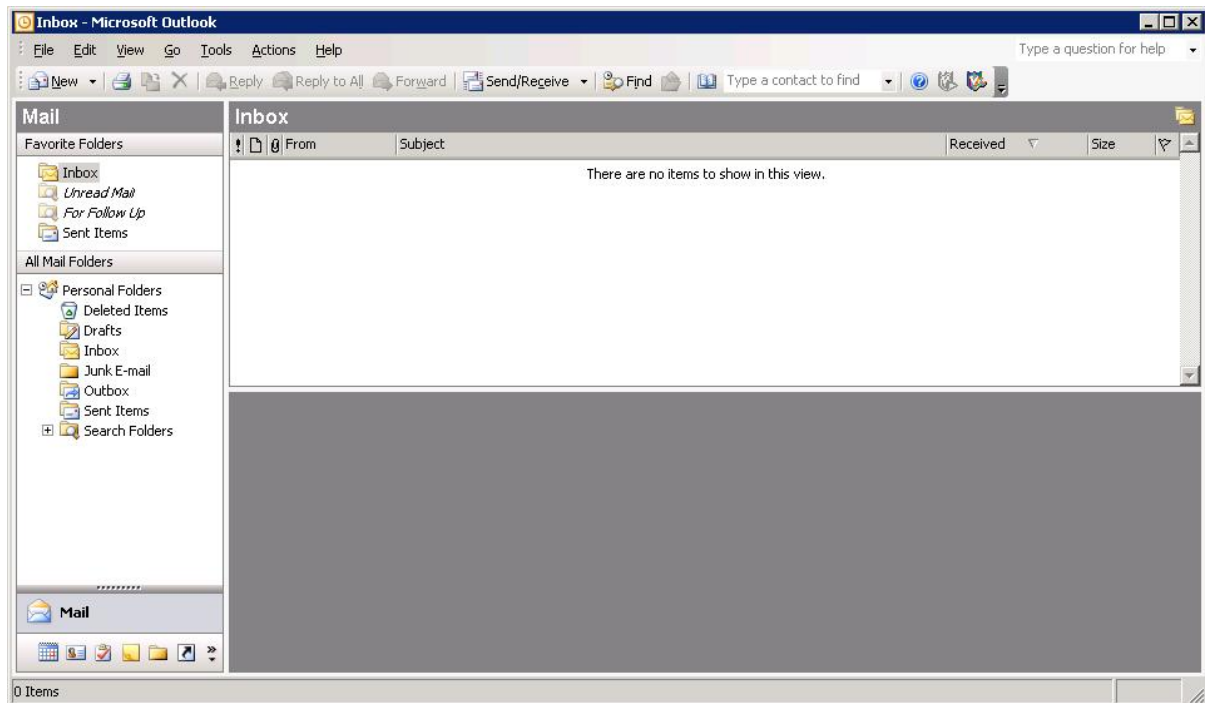


# Outlook 2003 Configuration

Open Outlook

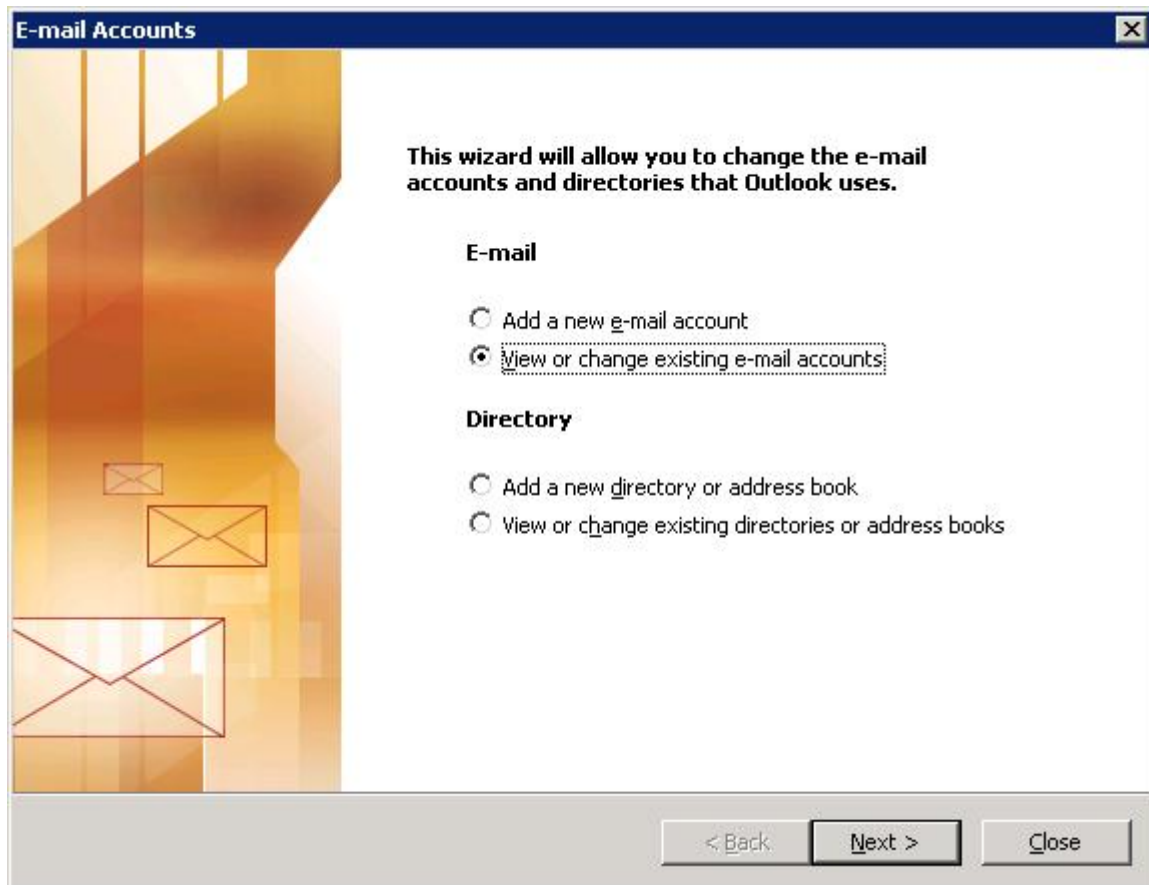


Click "Tools" from the top menus

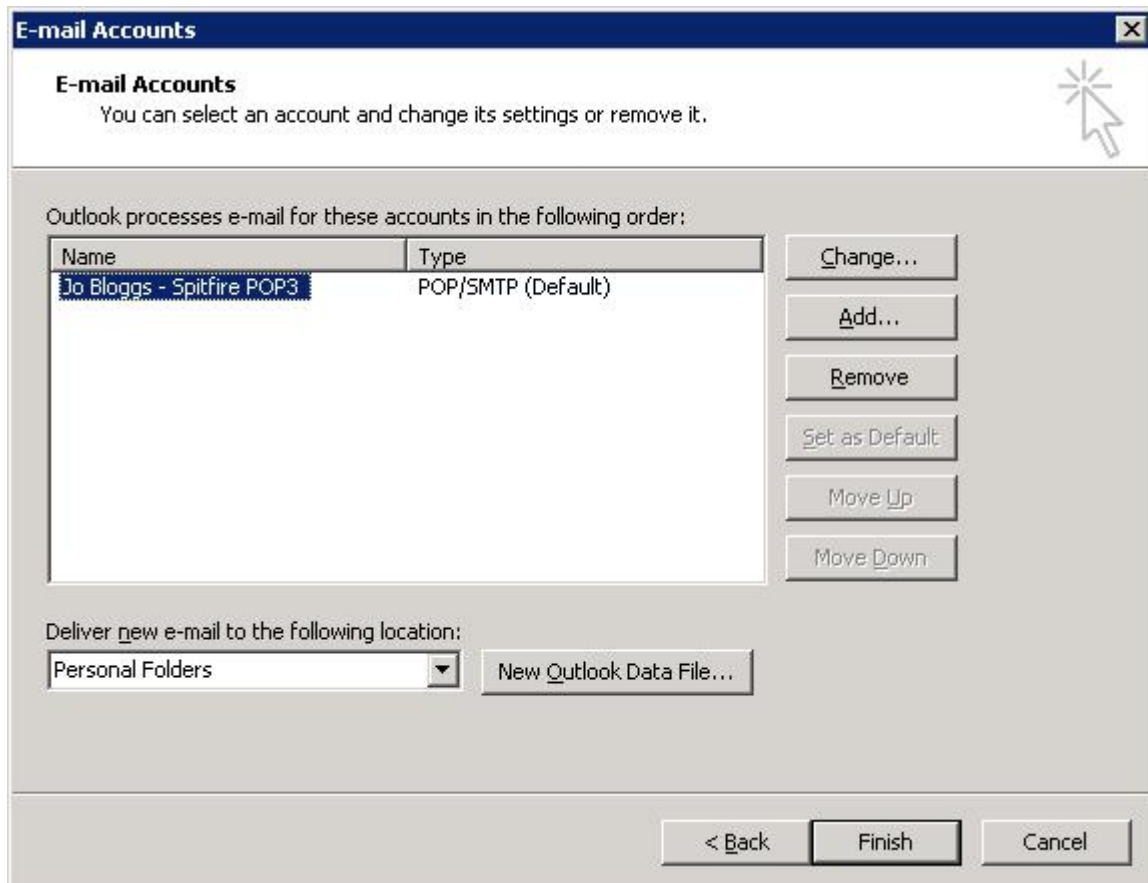
Click "Email Accounts"

Make sure the bullet is in "View or change existing e-mail accounts"

Click Next



You should see your POP3 account in the list.  
It will be of type "POP/SMTP"  
Select it and click change



Check the incoming and outgoing mailservers.

**ONLY** if you have 217.13.128.18 in either of these boxes should you change them.


**E-mail Accounts** [X]

**Internet E-mail Settings (POP3)**  
Each of these settings are required to get your e-mail account working.

**User Information**

Your Name:

E-mail Address:

**Server Information** 

Incoming mail server (POP3):

Outgoing mail server (SMTP):

**Logon Information**

User Name:

Password:

Remember password

Log on using Secure Password Authentication (SPA)

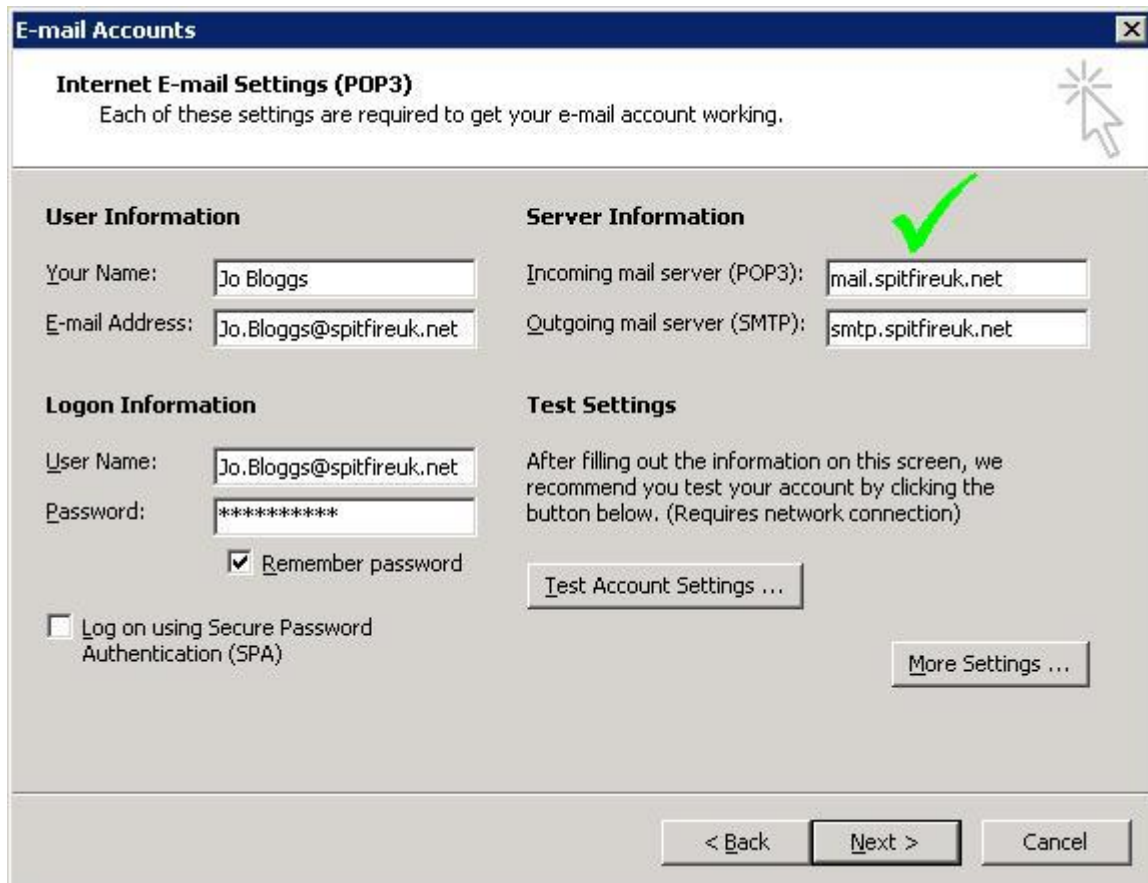
**Test Settings**

After filling out the information on this screen, we recommend you test your account by clicking the button below. (Requires network connection)

< Back    Next >    Cancel

The "Incoming Mail Server" should be changed to "mail.spitfireuk.net" without the quotes

The "Outgoing Mail Server" should be changed to "smtp.spitfireuk.net" without the quotes



**E-mail Accounts** [X]

**Internet E-mail Settings (POP3)**  
Each of these settings are required to get your e-mail account working.

**User Information**

Your Name:

E-mail Address:

**Server Information** ✓

Incoming mail server (POP3):

Outgoing mail server (SMTP):

**Logon Information**

User Name:

Password:

Remember password

Log on using Secure Password Authentication (SPA)

**Test Settings**

After filling out the information on this screen, we recommend you test your account by clicking the button below. (Requires network connection)

< Back   Next >   Cancel

Click "Test Account Settings"  
This should pass.  
Click Next and then Finish.

