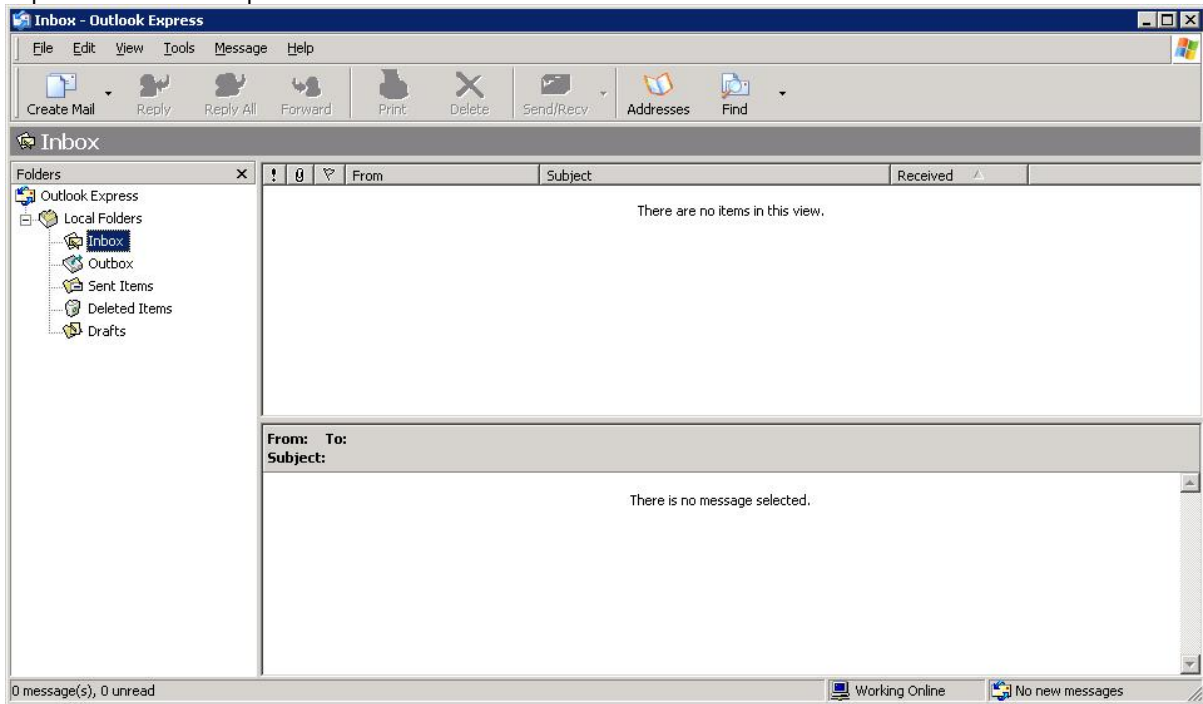
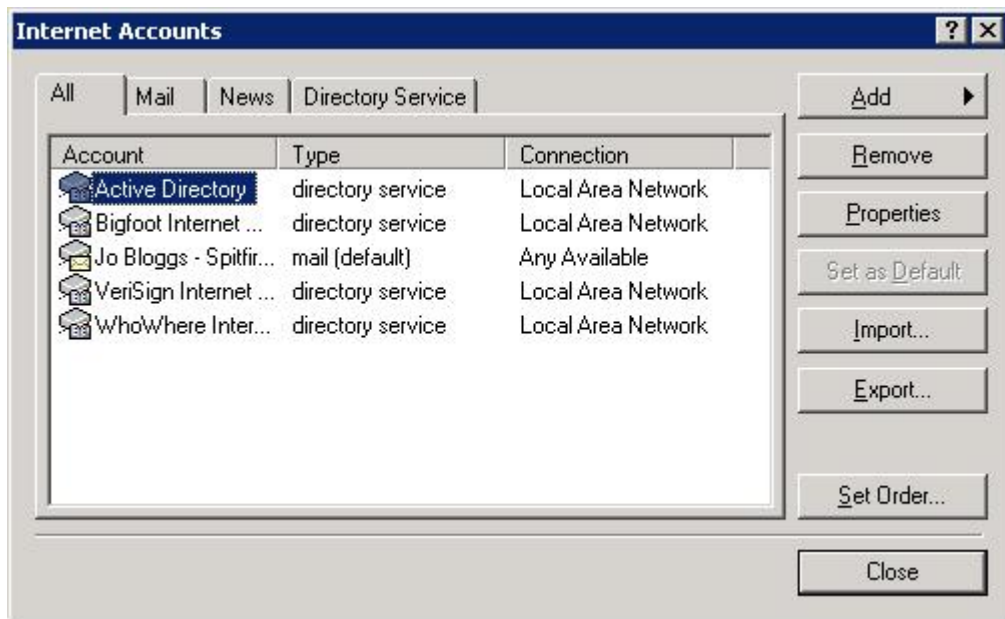


Outlook Express 6 Configuration

Open Outlook Express 6



Click Tools and then Accounts



Click Mail Tab



Properties of the correct account

The image shows a Windows-style dialog box titled "Jo Bloggs - Spitfire POP3 Properties". It has a blue title bar with a question mark and a close button. Below the title bar are five tabs: "General", "Servers", "Connection", "Security", and "Advanced". The "General" tab is selected.

Under the "General" tab, there is a section for "Mail Account" with a small envelope icon. The text says: "Type the name by which you would like to refer to these servers. For example: 'Work' or 'Microsoft Mail Server'". Below this is a text box containing "Jo Bloggs - Spitfire POP3".

Below the "Mail Account" section is a section for "User Information" with four text boxes:

- Name: Jo Bloggs
- Organization: (empty)
- E-mail address: jo.bloggs@spitfireuk.net
- Reply address: (empty)

At the bottom of the "User Information" section is a checked checkbox with the label "Include this account when receiving mail or synchronizing".

At the bottom of the dialog box are three buttons: "OK", "Cancel", and "Apply".

Click Mail Tab

Check the incoming and outgoing mail servers and change if required.

ONLY if you have 217.13.128.18 in either of these boxes should you change them.

The screenshot shows a Windows-style dialog box titled "Jo Bloggs - Spitfire POP3 Properties". It has five tabs: "General", "Servers", "Connection", "Security", and "Advanced". The "Servers" tab is selected. The dialog is divided into three sections: "Server Information", "Incoming Mail Server", and "Outgoing Mail Server".

Server Information: A dropdown menu shows "POP3" selected. Below it are two text boxes: "Incoming mail (POP3):" containing "217.13.128.18" and "Outgoing mail (SMTP):" containing "217.13.128.18". A large red "X" is positioned to the right of these two boxes.

Incoming Mail Server: "Account name:" is "jo.bloggs@spitfireuk.net". "Password:" is masked with ten dots. There is a checked checkbox for "Remember password" and an unchecked checkbox for "Log on using Secure Password Authentication".

Outgoing Mail Server: An unchecked checkbox for "My server requires authentication" is present. A "Settings..." button is located to the right of this checkbox.

At the bottom of the dialog are three buttons: "OK", "Cancel", and "Apply".

If you have changed the settings click OK, close and then try sending and receiving your email.

